

# MONTHLY MEMBERSHIP PROGRESS REPORT

LOCATION INDIA

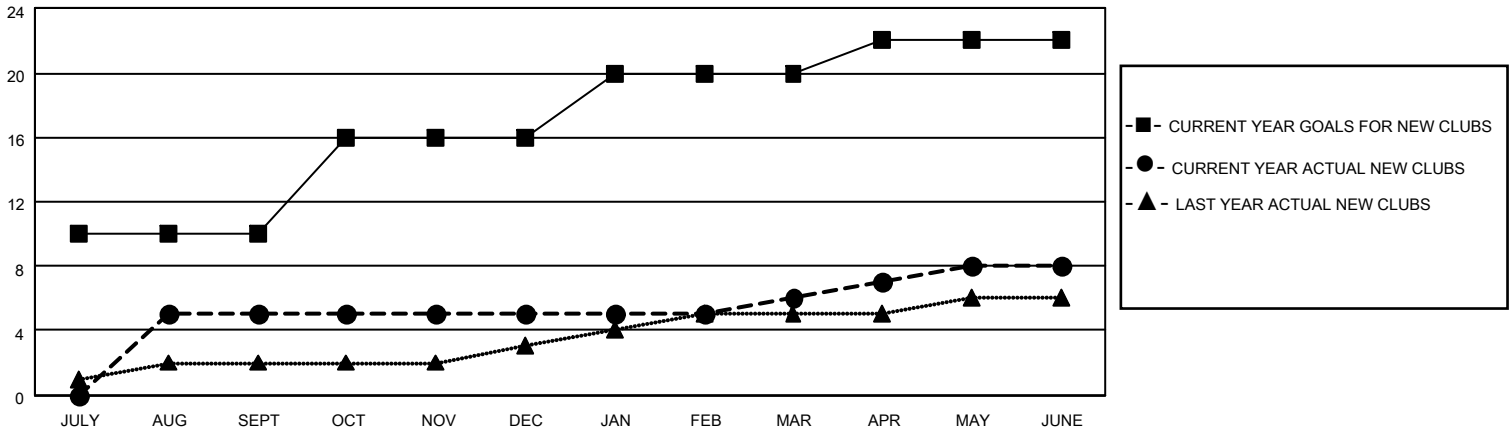
District 318 B

Results as of: 6/30/2023

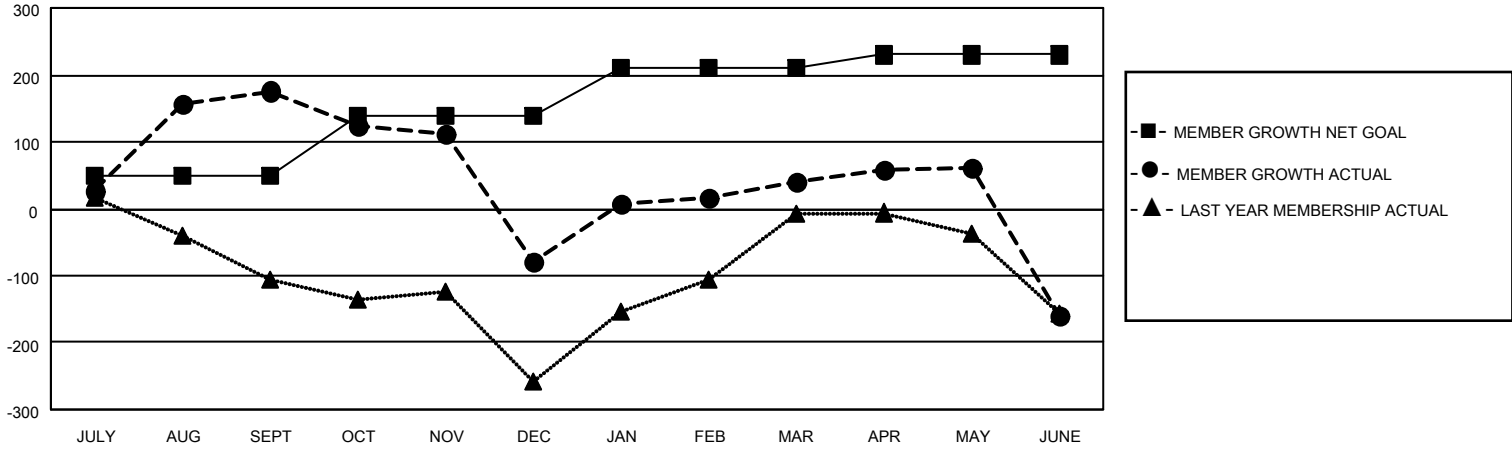
Clubs			
RESULTS FOR 2022-2023			
QUARTER	NEW CLUB GOAL	NEW CLUBS	DROPPED CLUBS
JULY/AUG/SEPT	10	5	0
OCT/NOV/DEC	6	0	6
JAN/FEB/MAR	4	1	0
APR/MAY/JUNE	2	2	4

Members			
RESULTS FOR 2022-2023			
QUARTER	MEMBER GROWTH NET GOAL	MEMBER GROWTH ACTUAL	DROPPED MEMBERS ACTUAL (including transfers)
JULY/AUG/SEPT	50	215	28
OCT/NOV/DEC	90	83	327
JAN/FEB/MAR	70	179	50
APR/MAY/JUNE	20	96	292

**GOALS AND ACTUAL NEW CLUBS CUMULATIVE**



**GOALS AND ACTUAL MEMBERS CUMULATIVE**



DROPPED CLUBS: 10	
<b>DROPPED MEMBERS</b>	
DECEASED	26
CLUB CANCELLED	246
OTHER	425
<b>TOTAL</b>	<b>697</b>

71 CLUBS OF 131 ADDED 1 OR MORE NEW MEMBERS

[CLICK HERE FOR CUMULATIVE MEMBERSHIP DATA](#)

<u>GENDER DISTRIBUTION</u>	
MALE	3,018 (86.28%)
FEMALE	480 (13.72%)
NON BINARY	0 (0.00%)
PREFER NOT TO ANSWER	0 (0.00%)
<b>TOTAL FAMILY UNIT MEMBERS</b>	<b>804</b>
<b>FAMILY MEMBERS PAYING HALF DUES</b>	<b>419</b>